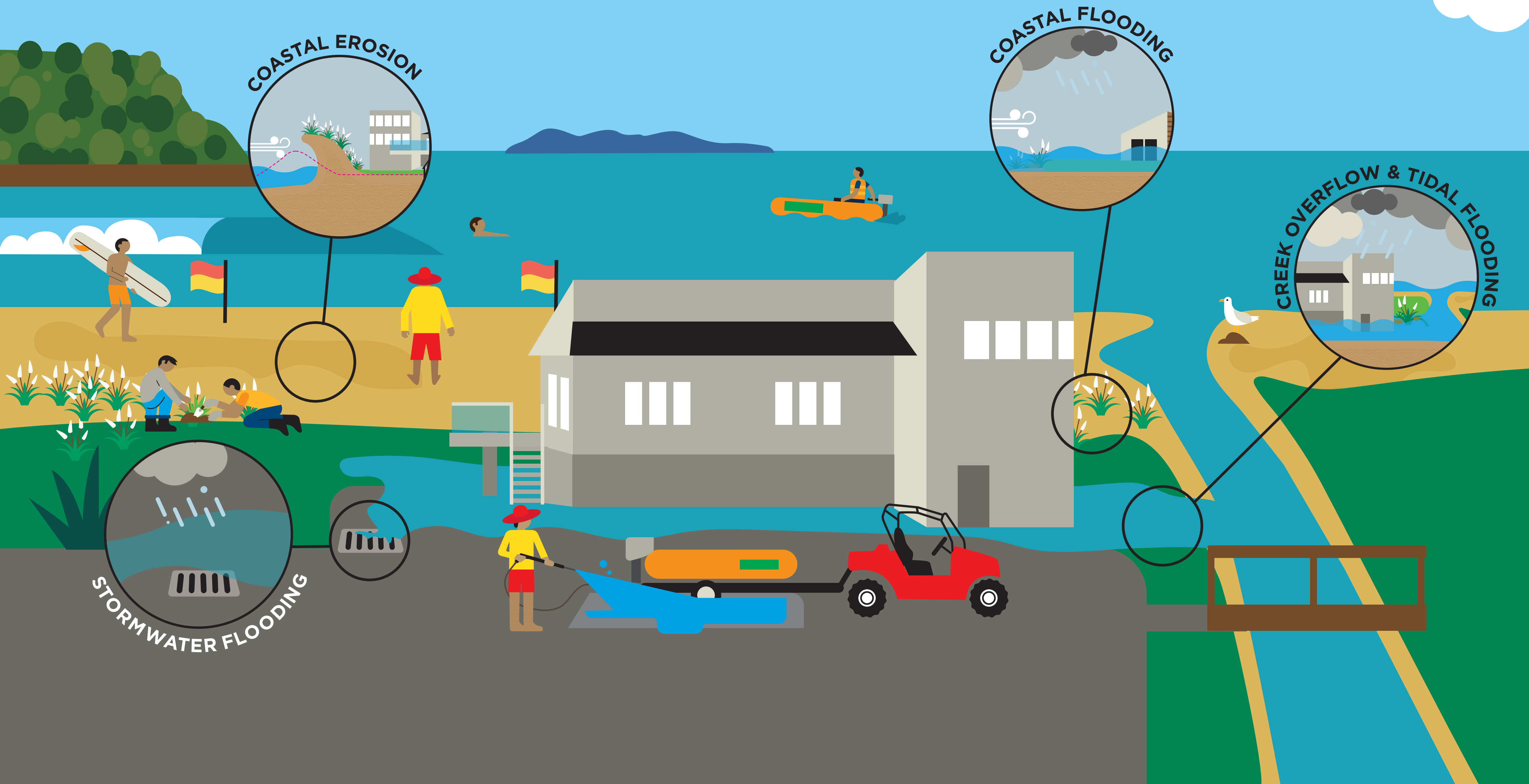
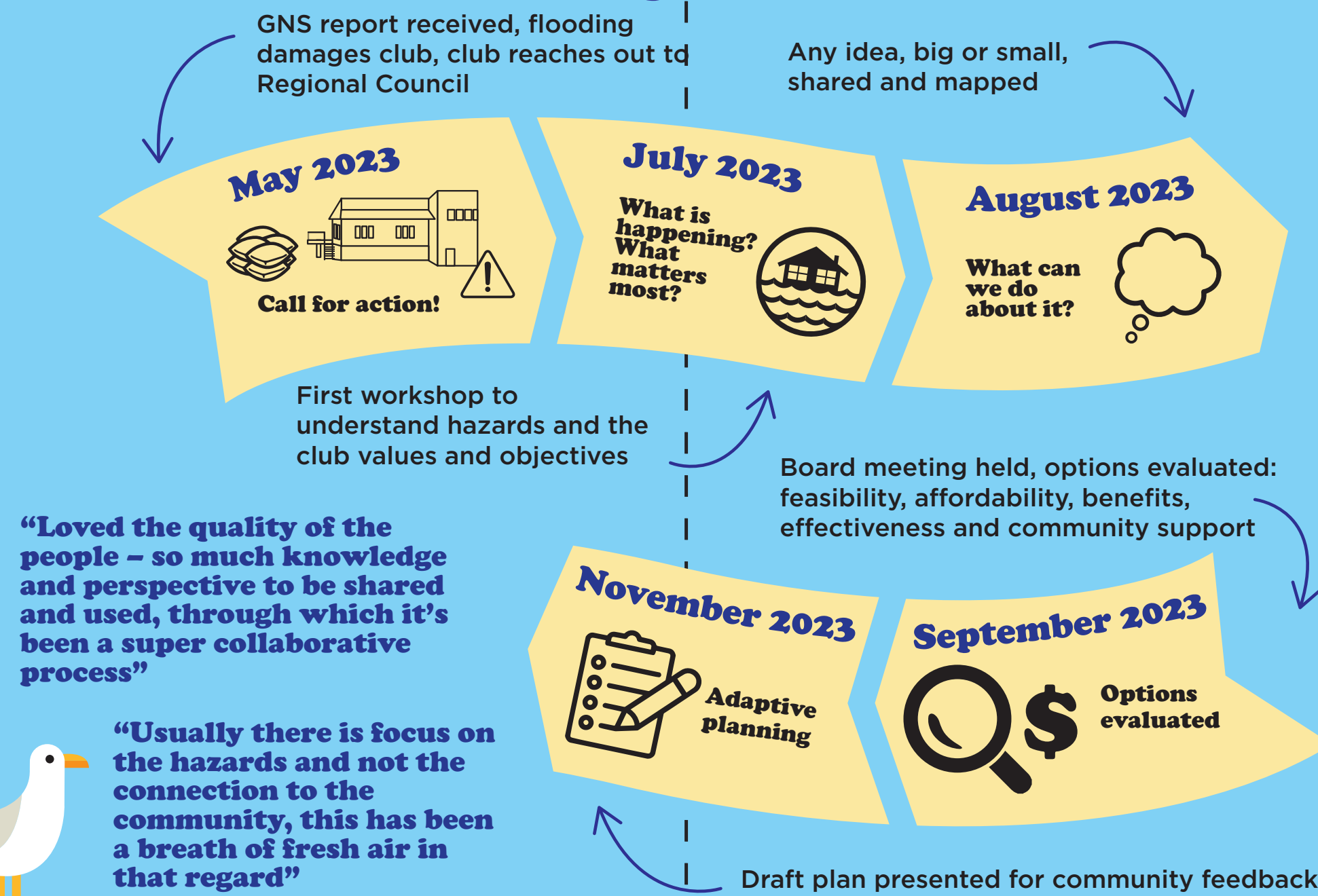


Natural hazards impacting the lifeguard club's delivery of services now and in the future

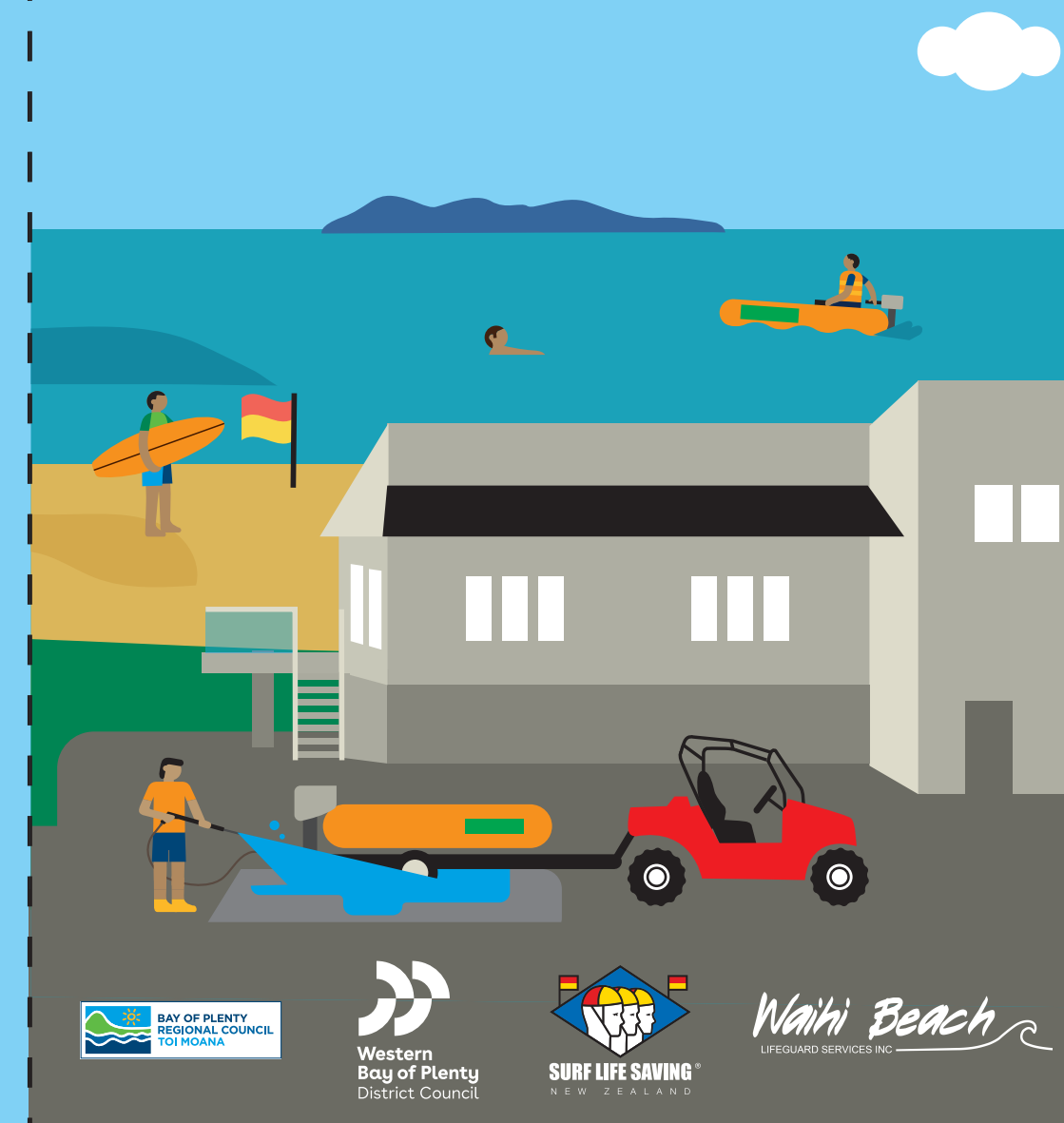
Waihi Beach Lifeguard Services vision: to ensure the beach community is protected and empowered.



The process



Rising to climate challenges: Waihi Beach Lifeguard Services Inc.



A short history

The lifeguard club is located in the heart of Waihi Beach and has been helping to keep swimmers safe since 1936. It still plays a critical role in the community today as a:

- base for summer patrols
- base for Search & Rescue (SAR)
- training centre
- community hub

Recent flood events and a report by GNS Science on sea-level rise and coastal flooding (inundation) has highlighted the club is one of the most vulnerable to coastal inundation in the country.

Faced with this knowledge, in May 2023 the club reached out to Toi Moana Bay of Plenty Regional Council for technical advice and support. This led the club to apply for funding to support adaptation planning. This funding set in motion a series of workshops to produce a community-led adaptation plan that will help ensure the club is more resilient in the future.

This brochure is about the journey this emergency services group took to better understand the climate challenges they will face and what changes they can implement to ensure the delivery of their patrolling and SAR services.

A dive into Adaptation Planning

Adaptive planning, often referred to as Dynamic Adaptive Policy Pathways or DAPP, is an innovative approach to decision-making under uncertainty. It empowers organisations and communities to make informed choices over time, adjusting strategies as conditions evolve. Here’s how it works:

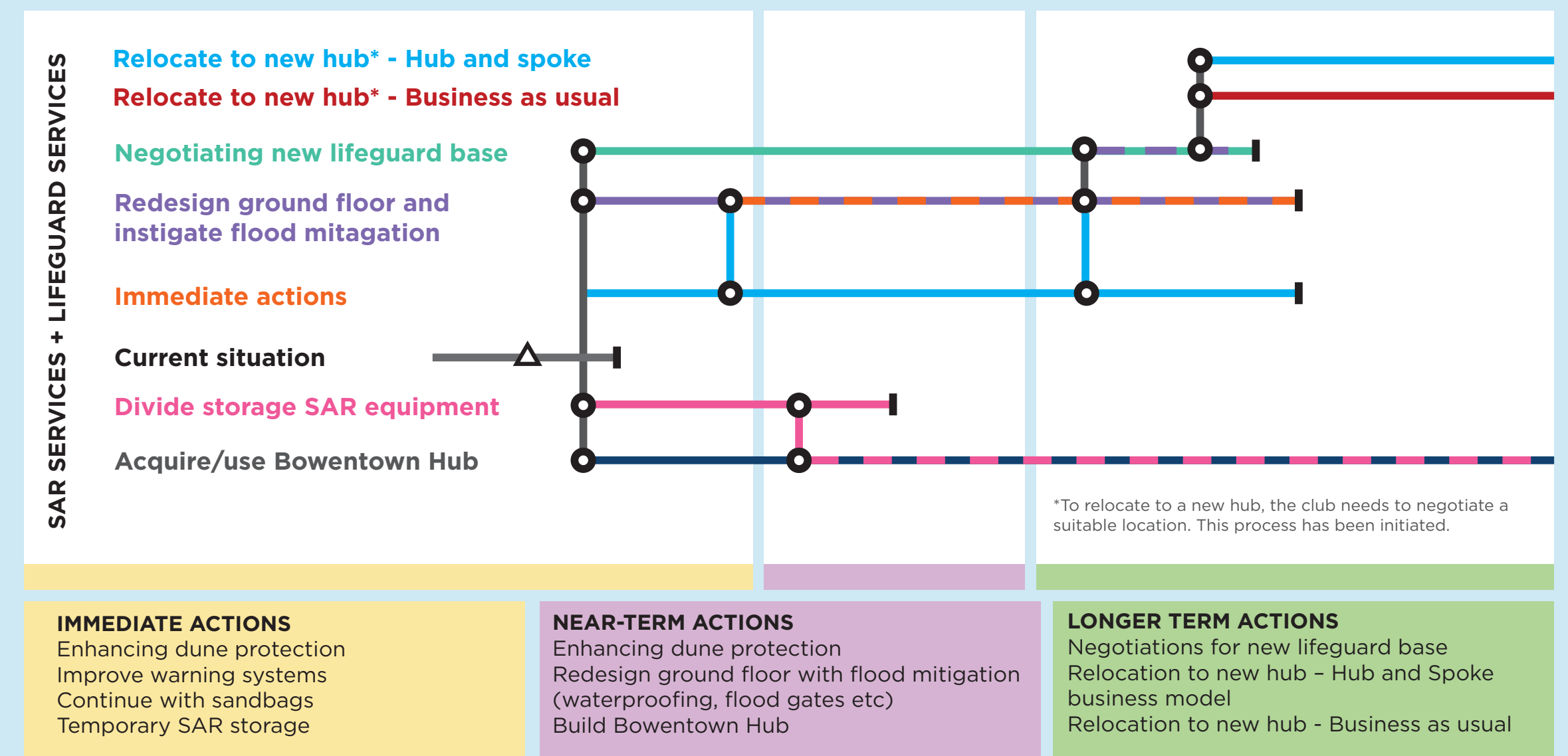
- 1. Pathways of action:** Imagine interconnected routes on a map. DAPP develops these pathways, each representing a potential course of action. They emerge based on unfolding events.
- 2. Thresholds (symbol):** Pathways have a limited lifespan; as hazards are identified and options become outdated, it’s time to switch.
- 3. Transition points to new adaptation option (symbol):** Critical junctures prompt reassessment. Decision points act as signals to switch pathways if needed.

The club’s DAPP on the right, considers adaptive plans for their two most critical services: Lifeguarding and Search and Rescue. Let’s explore:

- **Current situation pathway:** Starts with a signal (symbol) which triggered action in May 2023 for the club to reach out. The club faced inundation events more than three times during this year, time to act!
- **Actions:** Different adaptation pathways have been considered for immediate, near-term and long-term actions. Using the transition points, we can move from ‘Current situation’ to any of the actions listed by following the relevant pathway.
- **Changing lines:** As conditions evolve, the club can switch to alternative pathways over time. For instance, if negotiations for a new hub are successful, the club can relocate to a new and safer location.

Why start now? Adaptive Planning encourages proactive thinking without overcommitting. By acknowledging uncertainty, the club can prepare for the long term while remaining agile.

Waihi Beach Lifeguard Services DAPP



● Transition point to a new adaption option ▲ Signal ┃ Threshold